

WALLINGTON CHILDRENS HOME



Statement of Purpose



Wallington Children's Home is owned and managed by Lilian Davis Group Care Services Limited

Lilian Davis Group

Unit B4, Sutherland House

43 Sutherland Road

LONDON

E17 6BU

This statement of purpose has been prepared in accordance with the requirements of Regulation 16 and schedule 1 of the Children's Homes (England) regulations 2015.

Wallington Children's Home is maintained as part of a range of provisions that enable Lilian Davis Group to provide services to the Local Authority in their responsibilities to support families with children who have Learning or behavioural needs.



Nearby Park

Table of Contents	
INTRODUCTION.....	4
OUR VISION.....	4
OUR MISSION.....	4
OUR VALUES	4
SERVICES AND SUPPORT.....	6
THE HOME AND SURROUNDINGS	7
QUALITY AND PURPOSE.....	9
CARING FOR CHILDREN.....	11
SAFEGUARDING CHILDREN	13
Monitoring	15
CHILDREN’S BEHAVIOUR.....	17
Facilities and Support for Private Study.....	19
Therapeutic Provision and Model of Practice	Error! Bookmark not defined.
Integrated, Child-Centred Therapy Model.....	23
Core Therapeutic Professionals.....	23
Complementary Therapeutic Activities	23
Sensory Regulation Environment.....	24
Oversight, Continuity and Outcomes.....	24
CHILDREN’S HEALTH	25
POST 16 – CONTINUITY OF CARE	28
Transition Planning	28
2. Life Skills Development	28
3. Tailored Support	29
4. Housing Options.....	29
5. Continuity of Care	29
6. Multi-Agency Collaboration	29
7. Emotional and Mental Health Support.....	29
8. Monitoring and Feedback.....	30
STAFF TEAM AND RECRUITMENT	30
Lilian Davis Group Organisational Chart	32
QUALITY ASSURANCE.....	33
Statement of Regulatory Compliance.....	33

INTRODUCTION

At Lilian Davis , we recognise the unique challenges and universe of potential that lie within every child thus we provide a transformative environment where holistic development meets their individual care. Our approach allows each child to discover the joys of childhood and feel a tapestry of hope care and renewed purpose and zest for happiness.

OUR VISION

To have an open holistic family orientated home, where the children are the centre of what we do. The home aims to tap into each child's potential and bring the best out of them by exposing them to various activities, life skills and opportunities to develop. Staff will provide warmth, skills and knowledge that will empower children and young people to share views, wants, wishes and feelings. We will use the voice of the child to influence practices and how the home is run.

OUR MISSION

At our children's home, we are committed to positively transforming lives by laying the groundwork for success in providing a safe, secure, and loving environment, fostering positive relationships, inspiring dreams, and promoting personal growth and development.

OUR VALUES

As a residential children's home providing support and care for children who cannot live with their families, we are expected to uphold certain values to ensure the well-being and positive development of the children in our care. Some of our values include:

Safety and Security: Our homes will prioritise the safety and security of the children, ensuring they are protected from harm and provided with a stable and supportive environment.

Nurturing and Care: We will offer a nurturing and caring atmosphere, with trained staff who can meet the physical, emotional, and psychological needs of our children.

Respect and Dignity: Every child will be treated with respect and dignity, recognizing their individuality and rights.

Empathy and Compassion: Staff members must display empathy and compassion towards the children, understanding their experiences and providing emotional support.

Child-Centered Approach: The care and activities in the home will be child-centered, focusing on the children's wishes, needs, interests, and developmental stages.

Education and Skill Development: Our homes will provide access to education and opportunities for skill development, empowering the children for their future.

Inclusivity and Diversity: Our home will embrace diversity and promote an inclusive environment where every child feels valued and accepted.

Stability and Consistency: We will provide consistency in care knowing that routines are crucial for children's well-being, providing a sense of stability in their lives.

Collaboration and Family Involvement: Collaboration with the children's families, where appropriate, is essential to maintain family connections and support the child's reunification or other long-term plans.

Transparency and Accountability: Our Children's Homes will be transparent in their operations, maintaining open communication with stakeholders and being accountable for our actions

Advocacy and Child Rights: Advocating for the rights and best interests of the children in our care is a fundamental responsibility of every children's home.

Positive Role Modelling: Staff members will serve as positive role models, exhibiting appropriate behaviour and attitudes for the children to emulate.

Partnership with Professionals: We will collaborate with other professionals and agencies, such as social workers, therapists, and educators, to provide comprehensive support for the children.

Emotional Support and Counselling: Providing emotional support and access to counselling services is essential to help children cope with past traumas and challenges.

Continuous Improvement: Our Children's homes will strive for continuous improvement, regularly evaluating our practices and policies to enhance the quality of care provided.

Our values are embedded in all aspects of our decision-making process, delivery of services and planning for the future, inclusive of :

- Education
- Independence
- Self- Development
- Trust
- Compassion
- Integrity
- Respect
- Commitment
- Ownership

By upholding these values, we will ensure that our children's homes can create a nurturing and supportive environment that promotes the well-being and positive development of the children in our care.

Statement of Needs

Wallington Children's Home is registered to provide care and accommodation for up to 5 children aged 7 to 17 years, of any gender, who may present with a range of emotional and behavioural difficulties (EBD), learning

disabilities, and neurodevelopmental conditions including Autism Spectrum Disorder (ASD), Attention Deficit Hyperactivity Disorder (ADHD), Global Development Delay (GDD), and associated diagnoses.

We are experienced in supporting children who may have complex histories, including childhood trauma, attachment disorders, and anxiety-related behaviours.

Placements may be made on a planned or emergency basis, depending on individual circumstances and suitability. The home is not designed to accommodate children with severe physical disabilities requiring step-free access or those whose presenting risks cannot be safely managed within a group-living environment. Each referral is assessed through a thorough matching and risk assessment process.

SERVICES AND SUPPORT

We provide:

- Support services to Children with Emotional and Behavioural difficulties
- Children with Learning difficulties.
- Children with Autism Spectrum Disorder (ASD) and associated diagnoses
- Individualised behavioural support plans.
- Therapeutic interventions, including counselling and art therapy.
- Specialised education programs tailored to each child's unique learning style and needs.
- Physical, occupational, and speech therapies for children with learning disabilities.
- Life skills training, including social skills, self-care, and independent living skills.
- Recreational activities to support holistic growth, teamwork, and fun.

Therapeutic interventions, including art therapy, counselling, and access to specialist psychologists, are provided in collaboration with external agencies. Plans are tailored to individual needs and reviewed regularly

OUR COMMITMENT

We commit to:

- Collaborate closely with families, guardians, and other relevant stakeholders.
- Continuously train our staff to ensure that they are equipped with the latest methodologies and understanding of child psychology and behavioural management.
- Regularly evaluate our programs and approaches to ensure we are delivering the best possible outcomes for the children in our care.
- Act as a resource and advocate for children with behavioural challenges and disabilities, working towards a more inclusive society.

THE HOME AND SURROUNDINGS

our home is situated in the lovely area of Wallington in Sutton, close to transportation and amenities.

Wallington Children's Home is a two-storey family house, with a rear garden with five bedrooms on the first floor.

The home has a homely lounge, with a television and touch screen computer, where children can relax and carry out play activities. There is a kitchen/dining room area, with a family sized dining table and chairs, where everyone can sit and enjoy their meals; this can also be used for craft activities and games.

Our playroom/study area contains seating for quiet activities and relaxation, shelves of books and a variety of toys and activities. There are two bathrooms on the first floor, one equipped with a bath and the other with a shower; there is also an additional toilet downstairs.

The kitchen provides an environment well equipped for children to prepare, with staff support, snacks, drinks, meals, and baking activities. The facilities include a utility area which, although primarily used by staff for the running of the home, can also be accessed by the children, with supervision, to help develop self-help skills. Children are encouraged to participate in menu planning, shopping, food preparation and daily living skills.

Wallington project has a medium size garden with swings and soft play area. There is a seating area for children to relax in the shade in summer with a picnic table. There is a raised bed for growing produce of the children's choosing.

Outdoor sheds contain sporting equipment including bicycles, tabletop games, hoops, skipping ropes and various activities for games in the garden.

There is a sensory area at a quieter corner of the garden with textured grass matting, sand and musical chimes.

The grounds are secured by a gate and fencing to protect children's privacy and ensure their safety when accessing the front of the home and the garden.

All visitors must be approved by the Registered Manager or DSO and all visitor interactions with the children will be supervised

There are local restaurants in the neighbourhood close to the home. Children can enjoy a walk, with a meal or snack and a drink afterwards. Children benefit from amenities that are accessible by car such as cinemas, restaurants, country walks, swimming, and sports activities.

In the wider area there is access to amusement parks and theatres. Staff have access to designated transportation to enable children to access the community such as shops, cafes and play parks.

Wallington has access to a wide variety of places of worship for many faiths, and within a 30-minute drive, there are further religious establishments. We will support all children's religious, cultural and ethnicity needs within the local community, where preferences have been expressed.

At Wallington Children's Home we support children from aged 7 to 17 years who have challenging behaviour and those with needs such as Autism, Asperger's Syndrome, Global development delay, ADHD, and other associated diagnosis. This is a mixed gender home and cater for female, male and non-binary children, and young people.

Referrals are made to Wallington Children's Home via a child's social worker. We undertake

comprehensive assessments of their needs and introduce children to the home in a way that is right for them.

We have a continuous assessment plan throughout the placement ensuring that the child's needs are always met. The support is provided within a framework agreed through the child's annual review and care planning process. We provide full time placements, short breaks, and shared care support.

We support children and their families to visit and view the service – The Children's Guides and Family Handbook support these visits.

Emergency placements will be considered on an individual basis where a risk assessment will be carried out. The best interests of all children involved will always be at the forefront of any decisions made.

The home is open for 52 weeks of the year, including Christmas Day, New Year's Day and staff training days.

There may be times when, through joint planning and mutual agreement, a child may be able to stay beyond their 16th birthday. This will be evaluated on a case-by-case basis to ensure we are able to always meet the needs of the young person. If this was to occur, there would be a review of plans in place to support the young person to ensure we meet their changing needs.

We can be commissioned to implement clinical assessment and treatment plans for individual children, as appropriate, in liaison with other relevant persons/services; ensuring a multi-agency approach that values the child and puts the child's welfare at the centre of all decision-making processes.

If at any time we believe that we may not be able to meet the child's ongoing needs, this is discussed with all professionals and an intervention plan drawn up where we will ensure that we work with all the relevant professionals to support an effective transition into an appropriate home.

Accommodation Overview

Wallington Children's Home provides care for up to five children, aged 7 to 17 years, of any gender, including female, male and non-binary young people. The home operates a mixed-gender model with careful matching, risk assessments, and compatibility checks prior to any admission.

The home is a large, detached, two-storey property that has been carefully adapted to meet the needs of children with emotional and behavioural difficulties (EBD) and learning disabilities. Environmental adjustments include:

- A quiet indoor sensory room to support regulation and reduce anxiety
- Individual bedrooms that children are encouraged to personalise
- Calm, shared spaces with soft furnishings and structured routines to support emotional wellbeing
- External CCTV coverage of the garden and perimeter to enhance security

Sleeping and bathroom accommodation includes:

- Five individual bedrooms on the first floor, each fitted with thumb-turn locks (staff retain override keys for safeguarding)
- Two shared bathrooms upstairs – one with a bath, one with a shower – plus an additional WC
- Two WCs located downstairs; one is reserved for staff use

While the layout provides a domestic and homely environment, it has been arranged to ensure appropriate supervision and the safe delivery of care in line with the needs of children who may require high levels of emotional support or structured routines.

Location and Community Overview

Wallington Children's Home is located in the London Borough of Sutton, specifically in the Beddington South area — a quiet suburban setting with access to a wide range of local amenities including GP practices, pharmacies, dental clinics, schools, shops, parks, libraries, leisure centres, and places of worship. Public transport links are convenient, ensuring access to surrounding areas and central London.

The home is situated in a low-risk residential area, not known for significant antisocial behaviour or high crime. The calm environment is conducive to supporting children who require routine, safety, and therapeutic stability.

A comprehensive Locality Risk Assessment (LRA) is completed annually and reviewed regularly with input from the police and local safeguarding teams. This assessment includes analysis of nearby community risks such as transport hubs, areas associated with CSE, or known radicalisation concerns. The LRA informs our admission decision-making and ensures that children's placements are appropriately risk-matched.

We work closely with the Beddington South Safer Neighbourhood Team, who maintain regular meetings with our management team and provide up-to-date intelligence and guidance on community dynamics, changes in local risk profiles, and neighbourhood safety. This proactive partnership enhances our ability to maintain a secure, responsive care environment for children.

Surveillance and Monitoring Arrangements

Wallington Children's Home uses external CCTV cameras to monitor the front and rear entrances of the property, the driveway, and garden areas. These are installed to support safeguarding, crime prevention, and overall site security.

There is no CCTV inside the home. Surveillance is never used in children's bedrooms, bathrooms, or any private living spaces, and we are fully committed to preserving the privacy, dignity, and trust of every child.

The system is used in line with the Children's Homes (England) Regulations 2015, the Data Protection Act 2018, and UK GDPR requirements. Signs are clearly displayed to indicate that CCTV is in operation, and children, social workers, and families are informed as part of the admissions and induction process.

CCTV footage is held securely and only accessed by authorised staff. Usage is reviewed regularly by the Registered Manager to ensure it remains proportionate, justified, and compliant with legal and ethical standards.

QUALITY AND PURPOSE

The staff team at Wallington Project Children's Home are skilled in adapting their approach to suit the particular needs of the children they support, and the staff training is provided to develop and maintain individual's skills. Staff listen and respond to the voice of the child.

Our aims are

- To provide stability within an enjoyable and family friendly homes, which expand the opportunities available for children, whilst supporting them to learn skills appropriate to their age, ability and understanding, encouraging natural progression, within a home environment.
- To ensure that our home provides an unyielding foundation where our children are taught how to make better life choices leading to happiness, independence and moral excellence reflecting in all their decisions.

We do this by

- Working closely with the child, families, key professionals, schools, and others that are important to the child, to provide consistency and support in ways that are in the best interest of the child.
- Delivery of a personalised and child centred approach of all aspects of caring for the child
- Meeting all the young person's rights in all aspects of care whether for play, family life , social and or leisure activities
- Having systems in place to ensure they enjoy the best possible mental and physical health including a lifestyle which lends itself to achieving this. This will include balance diet as well as exercise
- Protect each child from harm, injustice exploitation and discrimination
- Involve and integrate the child into their community for all areas of life including leisure education, sporting opportunities
- Ensure that their educational needs are met and developed with educational curriculum within the home.



Children are encouraged and supported to have as much involvement in decisions regarding their care as possible. Link Workers will act as advocates for children within the home.

At times due to the nature of a child and the display of behaviours of concern, it may be identified that the best way to support the child, will be to have “Team around the Child” for a consistent and stabilising approach. Each child will have an individual Support and Outcome Plan that is reviewed at least annually or when their needs change, the plan needs to be a “living” document.

The ethos of the home is to provide a home from home environment where children can grow and develop through a nurturing process that caters to their individuality. We are committed to providing a caring environment where everyone is treated with dignity and respect.

We provide activities and opportunities to enhance the children's experiences and outcomes. We will complete a “My Story” with each child to celebrate all their experiences and achievements.

Intended Outcomes

Wallington Children's Home seeks to achieve the following outcomes for all children in our care:

- Improved emotional regulation and resilience, with reduced frequency and severity of behavioural incidents
- Progress in educational engagement, attainment, and attendance
- Strengthened and stabilised relationships with key adults (staff, family, or other carers)
- Development of self-care and independent living skills appropriate to age and ability
- Increased sense of self-worth, safety, and belonging
- Safe and supported transition to the next stage of care or independent living

We monitor outcomes through regular progress reviews, individual Support and Outcome Plans, keywork sessions, and feedback from the child, their family, social worker, and other professionals.

CARING FOR CHILDREN

The team at Wallington Project Children's Home value the feedback we receive about the service, this is sought from a variety of sources and any learning is embedded into our practice.

We are committed to gathering feedback, in ways that suit the individual's preferred communication methods, which may include verbal, written, pictorial, behavioural or making use of technological aids. Children are supported to complete feedback forms which enables children to be involved in the shaping of the care they receive and the development of the service.

Children are given the opportunity to express their views in a way appropriate to their individual communication abilities and needs. They are encouraged to participate in the review and development of services, both in general and in relation to themselves.

We work in a child-focused manner to provide a safe environment for children where they are supported, offered a variety of stimulation and benefit from life experiences and opportunities, to access a variety of in house and community-based activities. Children's wishes, hobbies and interests are therefore supported in this way.

Our staff support and respect the child's individual beliefs and wishes. We treat each child as an individual and in so doing we recognise that religious beliefs may influence every area of a child's life from philosophy, morality, to diet and preparation of food and mode of dress. These beliefs and wishes will be incorporated into an individual's Support and Outcome Plan and will shape the support and care they receive whilst at Wallington Children's Home.

Many children would have come to LDG after experiencing many changing circumstances with multiple moves and have been at serious risk. We will strive to promote permanence, safety and stability.

The provision of stability from a stable staff team is imperative to meeting their needs including framework and strategy implementation to meet their needs and contribution to outcomes including stable transitions through our programs and their lives.

We have a strong positive outcome driven culture which underpins all the work we do and deliver. Staff resilience, training, positive attitudes and objectivity applied to our core principles and values will



contribute to excellent outcomes for our children.

Our leadership team believes in working in a caring environment applicable to staff, stakeholders, and children alike to ensure that moral excellence is pervasive in all that we do and achieve.

We promote all our objectives in a way which reflects our core principles and values

The children move into the home with their own clothes, personal items, and equipment / medication, which are logged with sentiment item returned when and if they leave before their scheduled time. Children are encouraged to have personal items around them such as photographs and items that have a significant meaning to them. This, alongside personalising their bedroom, ensures that they feel at ease whilst living at Wallington Children's Home

In general, children do not stay at the home with pocket money, although when they do we ensure they are aware of how to keep this safe and will support them in accessing shops if required. While living at Wallington Project, a child has access to a variety of activities, both within Wallington Project and in the local community, and are supported and funded by the home.

Children thrive when their experiences are positive. Staff spend quality time creating positive relationships, through meaningful interactions. Children are also encouraged and supported to form friendships with each other and are included in creating their own placement, educational, healthcare plans etc using a reward system for achieving targets.

Meeting Cultural, Linguistic and Religious Needs

Wallington Children's Home is committed to ensuring that all children are supported to express and explore their cultural, linguistic and religious identities in a respectful, inclusive, and nurturing environment. We recognise that every child's background and beliefs are essential to their sense of identity and belonging.

We ensure children can attend places of worship, observe faith-based rituals, and follow religious dietary requirements as part of their daily routine. Staff support children to celebrate cultural festivals and religious observances, and we work with families, communities, and religious leaders where appropriate.

Where a child has **English as an additional language (EAL)**, we provide access to interpreting or translation services if required, and ensure that key documents and planning tools can be adapted to their communication needs. Visual and non-verbal communication methods are used alongside verbal interactions where appropriate.

Children are encouraged to share their heritage and customs, and these are integrated into meal planning, celebrations, life story work, and educational activities.

Recreation, Hobbies and Enrichment Activities

Wallington Children's Home offers a wide range of activities designed to meet each child's creative, intellectual, physical, and social interests. We understand that access to play and recreation is a key part of a child's development and emotional wellbeing.

Children are supported to participate in community-based outings such as cinema trips, country walks, sports sessions, swimming, museums, and local events. Inside the home, they have access to resources for board games, arts and crafts, reading, musical play, and interactive activities.

The garden features a soft play area, swings, raised vegetable beds, and a seating area for socialising. Sporting equipment is available including bicycles, hoops, skipping ropes, and team games. Activities are adapted to suit children's individual needs and preferences, including for those with sensory processing differences or social anxiety.

Staff actively consult with each child to understand their hobbies and interests, and activity plans are reviewed regularly to ensure they remain engaging and relevant. Children are encouraged to try new experiences, build confidence, and develop social skills through structured and informal play.

For children with learning disabilities or additional support needs, we tailor activity sessions to promote participation, skill development, and positive achievement at their own pace.

Contact with Family and Significant Others

Wallington Children's Home recognises the vital role that family and significant relationships play in a child's identity, development, and emotional wellbeing. We are committed to promoting safe and meaningful contact for children in line with their care plans, placement agreements, and court directions.

Children are encouraged and supported to maintain relationships with parents, siblings, extended family, and other significant individuals, where this is assessed to be in their best interests. The type and frequency of contact is planned in consultation with the child, their social worker, and relevant professionals, and is recorded in the child's Support and Outcome Plan.

The home can facilitate face-to-face contact, telephone or video calls, and written correspondence. Supervised or supported contact is provided where required, and staff are trained to manage contact visits sensitively, ensuring the child's emotional wellbeing is prioritised before, during, and after contact.

Staff provide transport and logistical support for contact visits when needed, and assist children in preparing for contact through keywork sessions and emotional support. Feedback from children is used to review contact arrangements regularly, and any safeguarding concerns are immediately escalated to the child's social worker and, if necessary, the Local Authority Designated Officer (LADO).

SAFEGUARDING CHILDREN

It is the aim of the home to ensure that every child always feels relaxed and safe. Any safeguarding disclosure will be treated sensitively and supportively, as per Lilian Davis Group and the Local Authority's Child Protection Policies and Procedures. All disclosures will be treated seriously and reported as appropriate.

The Designated Safeguarding Officer (DSO) at Wallington Children's Home oversees all safeguarding and child protection matters, ensuring compliance with local authority protocols and Ofsted guidelines. The DSO is trained in advanced safeguarding and child protection frameworks, acting as the primary contact for all safeguarding concerns."

A robust Locality Risk Assessment containing information from both the Local Police and Sutton Police website is produced annually, the crime rate for the immediate area around the Wallington home is low.

All those involved with the provision of services for children in the children's home settings, must be alert to the possibility of abuse by other children, visitors, and members of staff. Staff attend relevant training,

in line with the Sutton and other referring Local Authority policies. Staff are able, if they have a specific interest, to request training in specific areas of Safeguarding through the appraisal process. The staff team working at Wallington Children's Home have access to the Management Team On-call for advice and guidance, as well as regular supervision in which they can discuss any concerns they may have. We have an "Open Door" Policy whereby staff can seek support from the Management Team whenever they feel this is required.



Identified staff have involvement in local safeguarding forums, which enables us to have a knowledge base of the most recent developments and practice. This information is then cascaded down to the Team.

All children have a Fire Evacuation Plan, and the home has an annual Fire Risk Assessment completed.

All compliments, concerns and complaints are taken seriously. Children are encouraged to share compliments, concerns and complaints with their parents and carers, staff, managers, or the Service Manager for Lilian Davis Group. Wallington Children's Home adheres to Sutton Council and Lilian Davis Group complaints policies and procedures.

Children, parents/carers, members of the public, agencies or professionals are able to raise compliments or concerns to staff, lead professionals, or go directly to MASH, LADO, or Ofsted. Requests to see the homes policies and procedures can be made to Wallington Children's Home or Lilian Davis Group Ltd.

Children's Rights, Complaints and Advocacy

Children are informed of their right to raise concerns or complaints about any aspect of their care, and they are supported to do so in a way that suits their communication style — whether verbal, written, pictorial, or via an advocate or trusted adult. Information on how to make a complaint is provided in the **Children's Guide**, and staff discuss this during the child's induction and keywork sessions.

All complaints are taken seriously, recorded in the home's Complaints Log, and responded to within appropriate timescales. The Registered Manager oversees complaint resolution and ensures feedback is shared with the child, social worker, and others as required.

Children also have access to independent advocacy services. We actively promote the role of the child's advocate and support referrals where a child requests one or where there are issues around placement, safeguarding, or rights. The home provides information about advocacy services such as:

- NYAS (National Youth Advocacy Service) – 0808 808 1001 – www.nyas.net
- Local authority advocacy services (details vary by placing authority)

Our staff also promote children's rights as outlined in the UN Convention on the Rights of the Child, and ensure the child's voice is central to care planning and day-to-day decision-making in the home.

Compliments, Concerns and Complaints can be made to:

Chantele Bucknor – Registered Manager
Lilian Davis Group
Unit B4, Sutherland House

COMPLIMENT? SUGGESTION? COMPLAINT?



43 Sutherland Road
LONDON
E17 6BU
Tel: 0203 620 9663
Mobile: 07486 562 697

Monitoring

We do not have surveillance or monitoring systems inside the home, however CCTV systems cover the external gardens and surrounding house and front yard. If there is an individual requirement for CCTV within the house to safeguard a child or other children the appropriateness to the children will be assessed, including staff monitoring.

We provide Wi-Fi throughout, but parenting protocols are applied for access, including social media. We work with the social worker, child, and their family as appropriate to ensure access is safe and will support any staff monitoring that is required. At Wallington Children's Home, we utilise Lightspeed Technology to ensure secure internet access, tailored to the needs of both the young people and staff in our care. Lightspeed Technology is an advanced digital filtering and monitoring system designed to create a safe online environment for all users. This technology helps us filter content, blocking unsuitable websites and chat rooms, while allowing access to educational and age-appropriate resources.

The benefits of using Lightspeed Technology in our home include:

Enhanced Safety: By filtering harmful and unsuitable content, we protect children and staff from online risks, ensuring internet use remains safe and constructive.

Controlled Access: Lightspeed allows us to set usage limits, automatically turning off access at set times, which helps establish healthy screen time habits.

Flexible Support for Education: Lightspeed's customisable filtering enables access to online learning tools and resources, supporting our educational goals for children.

Improved Monitoring: Staff can oversee internet use, ensuring compliance with safeguarding standards and helping us identify any potential concerns early.

Staff Oversight: Lightspeed also monitors staff internet activity, ensuring adherence to organisational policies and promoting a professional online environment.

The home promotes an environment in which bullying is not acceptable. If bullying is found to occur, effective strategies will be implemented to manage the situation safely and promptly. We support children to actively come forward with their concerns in any area.

Staff at Wallington Children's Home are aware that children need privacy. However, this must be balanced with issues of protection and safety. The privacy and dignity of the children are respected at all times. There may be exceptions to this if monitoring is required due to individual needs for health and safety reasons.

All children who live at Wallington Home have their own private bedroom of their choice, wherever possible. They have the option of locking the bedroom door if they wish to, although staff do carry a key to the door, and will use it to unlock a door if they deem the child to be at risk.

The need for supervision, checks, and the use of audio or visual monitors during the night, is assessed on an individual basis. Night-time monitoring will only take place where there is an identified need which will

them going missing from care – we will link with the local police, where necessary.

Fire Safety and Emergency Procedures

Wallington Children’s Home is equipped with a fully integrated fire detection and alarm system, which is tested weekly. Fire extinguishers and emergency lighting are installed throughout the property and are checked regularly by a qualified external contractor. A Fire Logbook is maintained on-site to record all checks, tests, drills, and servicing.

All staff receive fire safety and emergency evacuation training during induction, and this is refreshed annually. Children are supported to take part in monthly fire drills, and individual evacuation needs are considered as part of each child’s Personal Emergency Evacuation Plan (PEEP).

Staff use child-friendly tools, including social stories or visual cues, to ensure that children with learning difficulties or sensory processing issues can understand and follow emergency procedures safely. Fire exits are clearly marked and unobstructed, and the home’s fire risk assessment is reviewed at least annually by the Registered Manager or a delegated competent person.

CHILDREN’S BEHAVIOUR

At Wallington Children’s Home, we promote positive behaviour and relationships. Children have staff members supporting them that they are familiar with. Wherever possible the child will consistently be supported by their key staff member.

We are aware that, at times, children may present behaviours of concern, which may be due to their mental health, environmental factors, medical conditions, or as part of growing up. We support children with behaviours of concern using the Positive Behavioural Support Management Ethos. The valuing of individual rights, opinions and wishes of children and working in partnership with them and their families is seen as paramount.

The management of physical and emotional, harmful behaviour is based on positive encouragement, diversion, and distraction to change or deflect behaviour.

Wallington Children’s Home has close links with external professionals who can provide support and advice for the staff team, and the child. We aim to minimise concerning behaviours and work with the child in order to ease out their frustrations in a safe manner. The staff team have regular meetings in which they can discuss strategies to positively support children.

If behaviour becomes dangerous for the child or others, staff may, as a last resort, need to use a physical intervention to support the child. Wallington staff team receive behaviour management training which incorporates training and assessment of competence of physical guides and holds.

Any use of a physical intervention or restraint will follow the guidelines set by the Department of Health and the Local Authority Council. This is used only as a last resort and reflects the presenting behaviour, using the least restrictive intervention for the shortest time possible, to keep people safe. All children who use our service will have a Support and Outcome Plan which includes a Risk Assessment, Behaviour Plan, and a Positive Handling Plan where applicable.

De-escalation of behaviours is supported with positive strategies.



Details of any physical restraint and/or intervention will be recorded and shared with parents or carers and relevant professionals. Health Monitoring forms are available for use if required. The Department of Health Guidance 2002, 'Restrictive Physical Interventions: How to provide safe services for people with learning disabilities and autistic spectrum disorder', will underpin and support good practice.

It is important that restraint is only used as a last resort and must be clearly identified as part of the children positive behaviour support plan and agreed by all professionals and parents supporting the children. All incidents of restraints will be reported on an incident reporting form and all cases of restrictive physical intervention recorded in the RPI logbook and form. Our behaviour management training emphasises communication and de-escalation as well as a full understanding of the causes of challenging behaviour, reducing the need for utilising measures such as restraint.

Behaviour Management Oversight and Safe Practice

All staff receive mandatory training in a recognised behaviour management model, currently PRICE, which includes safe techniques for de-escalation, conflict resolution, and restrictive physical intervention where necessary.

Physical intervention is used only as a last resort and must be reasonable, proportionate, and necessary to prevent injury to the child or others, serious damage to property, or to manage significant risk. Any use of physical intervention is recorded in the home's Restrictive Physical Intervention (RPI) log, and the incident is reviewed by the Registered Manager.

Following any incident involving restraint or significant behavioural crisis, the child is offered a post-incident debrief, with the support of a trusted staff member. The aim is to help the child understand the event, express their feelings, and contribute to revised support strategies if needed.

Staff involved in the incident also participate in a staff debrief to promote reflective practice and ensure continuous learning. Behaviour Support Plans and Risk Assessments are updated as required, and the child's social worker and parents/carers are informed.

EDUCATION

At Wallington Children's Home, we support children to make progress towards achieving their educational potential. EHCPs and Individual Education Plans are incorporated into the care plans where applicable. We provide designated facilities and support to enable children to complete homework tasks where needed.

The staff team have close working relationships with the schools that the children attend. We are able, by arrangement with school and home, to visit the children and see them in their school environment. Staff are able to liaise with the class teacher and teaching assistants to provide continuity of care with regard to any educational and behaviour plans. Wallington staff members consult with additional services to provide the children with necessary resources to aid learning and attainment.

A representative from Wallington Children's Home will attend the child's annual EHCP review and provide

a written report where required. The “My Stories” that are completed can be taken to the reviews. The staff complete Wallington Children’s Home review books to maintain effective communication with families and Education.

At Wallington Home we aim to provide a good level of educational support to all the children within our care, promoting life skill development and learning through play, fun and new experiences, in a safe and supportive environment.



We make necessary adjustments to ensure we meet the additional responsibilities for Children in Care. We do this by liaising with key professionals and families, and by adjusting the support we provide as required to meet the individual’s needs.

As part of the individual Support and Outcome Plan at Wallington Home, each child has identified outcomes that are regularly monitored; identifying progress and adaptations to support the requirements of each individual. These will be evidenced in the children’s own ‘My Stories’ so that the children and family can celebrate their achievements.

When a child is in the process of transition to adulthood, the staff team will support the process in a child focused way as required for best outcomes.

Facilities and Support for Private Study

Wallington Children’s Home promotes a strong learning culture and ensures that every child has a suitable space to complete homework and engage in educational activities. While there is no dedicated study room, each child has a spacious private bedroom furnished with a desk and chair to enable quiet study and reading.

The home also includes a communal area which offers additional space for creative learning, group activities, and structured educational games.

Staff support children with homework and liaise with schools, teaching professionals, and Virtual Schools to maintain continuity of learning and address any educational concerns. We can also provide access to learning resources, including age-appropriate books, digital apps, and supervised computer use.

Children’s educational progress is monitored through regular reviews involving staff, the child, their social worker, and education professionals, ensuring that each young person receives the support they need to achieve their goals.

Therapeutic Model Summary

Wallington Children's Home delivers a structured, creative, and trauma-informed therapeutic model designed to meet the diverse emotional, behavioural, and developmental needs of children aged 7–17. Our practice is guided by a commitment to relational and child-centred care, utilising input from trained external therapists and daily contributions from keyworkers and support staff. The home's therapeutic approach is embedded within daily routines, placement planning, and reflective supervision.

We ensure children receive therapy aligned to their individual needs, delivered through sessional contracts or SLAs with qualified professionals (e.g. Occupational Therapists, CBT practitioners, SLTs, or Clinical Psychologists). Every child's emotional development is tracked using the **Therapeutic Outcomes Framework**, a 22-domain scoring tool rated on a 5-point scale from:

- **1 – Very Low:** Significant concern; the child is struggling consistently in this area
- **2 – Emerging:** Some early signs of progress, but inconsistent
- **3 – Developing:** Moderate improvement and regular engagement
- **4 – Secure:** Stable performance and evident growth
- **5 – Thriving:** Outstanding progress with minimal support

This structured framework enables us to evaluate a child's growth across key domains such as Emotional Regulation, Communication, Self-Esteem, Educational Engagement, Cultural Identity, Sensory Integration, Behaviour, and Social Interaction. A maximum score of **110** is possible, and the child's total is reviewed termly to map therapeutic progression. Each score is evidence-led, based on staff logs, professional feedback, and the child's own reflections.

Feedback Integration

All therapist feedback — whether from the Occupational Therapist (OT), Cognitive Behavioural Therapist (CBT), Speech and Language Therapist (SLT), or any other external professional — is uploaded and logged onto Charms by the staff team. These entries are reviewed by the Registered Manager, who determines whether the feedback requires updates to the child's placement plan, outcome score, or any other care document. This ensures therapeutic input remains active and actionable.

Multi-Professional Reviews

The Registered Manager or Deputy will organise regular internal reviews that bring together the therapeutic feedback received. These reviews may be aligned with Looked After Child (LAC) statutory reviews or internal multidisciplinary planning sessions. Therapeutic feedback and scoring will also be used to inform statutory Looked After Child (LAC) reviews and Education, Health and Care Plan (EHCP) discussions, ensuring regulatory alignment. In these forums, therapists' reports will be discussed to shape care priorities and ensure therapeutic goals remain aligned with the child's evolving needs.

Document Updating

Progress or challenges identified in therapy sessions trigger immediate updates to the child's Placement Plan, Therapeutic Outcomes Framework Score Sheet, Risk Assessment, and—where applicable—their Personal Education Plan (PEP) or Education, Health and Care Plan (EHCP). Timely and evidence-based updates ensure accurate alignment between therapeutic provision and practical support.

Child and Family Voice

Therapeutic feedback is discussed during keywork sessions in child-friendly ways, allowing the child to reflect on what has helped, what feels difficult, and what they would like to change. Their views are recorded on Charms and considered in every review meeting. Where appropriate, the voice of parents or carers is also captured and shared with relevant professionals to strengthen the continuity of support across home and family environments. These views are directly considered when reviewing and updating support plans, ensuring that therapeutic care remains personalised and responsive

Roles Supporting the Therapeutic Model

- **Keyworkers** (separate from Support Workers) are assigned to each child and have protected time during shifts for reflective dialogue and outcome monitoring. They are responsible for recording therapy-related insights in Charms, maintaining the Personal Education Plan (PEP), and attending strategy reviews.
- **Support Workers** embed therapeutic strategies in daily routines and provide vital observational data, especially for sensory needs, regulation, and emotional literacy.
- **Registered Manager and RI** are responsible for ensuring that the outcomes score sheet is updated each term, reviewing logs, chasing outstanding therapist reports, and ensuring Charms is used consistently.
- **Charms Administrator/Senior Admin** ensures therapist reports are uploaded, correctly labelled, and protected. Missing data is flagged immediately.

Adjusting Support Based on Outcomes

Where therapeutic progress stalls or new needs arise, the Registered Manager may commission additional therapy, request urgent reviews, or consult other professionals (e.g., CAMHS, Educational Psychology). Adjustments are reflected in care planning and documented in the outcomes framework.

Mapping Trends and Evidence

Each term, the Therapeutic Outcomes Framework is updated, and the total score is compared to prior terms to map the child's progression. Red, Amber, and Green bands help identify priority cases:

- **Red (0–44):** High concern
- **Amber (45–79):** Moderate concern
- **Green (80–110):** Positive development

This system provides Ofsted and placing authorities with robust, trackable data that evidences impact and improvement over time.

A sample of the Therapeutic Outcome Score Sheet and banding system is provided below for reference.”
This helps Ofsted and readers know to expect and review the visual scoring tool that follows.

SCORING SAMPLE REPORT

			Score 1 – Very Low	Score 2 – Emerging	Score 3 – Developing	Score 4 – Secure	Score 5 – Thriving
Outcome Area	Definition		Significant concern; the child is struggling consistently in this area.	Some early signs of progress, but development is inconsistent or minimal.	Moderate improvement; the child shows regular engagement and growth.	Solid performance; the child is demonstrating stability in this area.	Outstanding progress; the child is flourishing with minimal support.
Emotional Regulation	Ability to identify, manage, and express emotions appropriately.		1				
Attachment & Trust	Capacity to form trusting relationships and feel emotionally and physically safe.			2			
Communication & Expression	Ability to communicate thoughts, needs, and emotions verbally or non-verbally.				3		
Social & Peer Interaction	Interaction with peers and adults in a meaningful, positive way.					4	
Self-Esteem & Identity	Confidence in oneself, self-worth, and the ability to recognise personal strengths.						5
Educational Engagement & Progress	Attendance, participation, motivation, and achievement in formal or informal education.		1				
Behaviour & Risk Reduction	Reduction in risky or unsafe behaviours; better boundaries and self-control.			2			
Independence & Self-Care	Daily living skills, hygiene, organisation, time management, and autonomy appropriate to age.				3		
Sensory Integration	Ability to process and respond to sensory input in a regulated way (supported by OT plans).					4	
Emotional Literacy	Ability to recognise, label, and understand one's own and others' emotions.						5
Cultural Identity & Expression	Connection to personal heritage, faith, traditions, or languages that shape a child's sense of self.		1				
				2			
Creative Expression	Use of art, music, drama, or writing to explore and process thoughts and feelings.				3		
Focus & Executive Functioning	Ability to concentrate, plan, remember tasks, and complete sequences of activity.					4	
Health & Physical Wellbeing	Participation in physical activity, healthy routines, and overall wellness awareness.						5
Community Participation	Involvement in clubs, groups, trips, and engagement beyond the home.		1				
Resilience & Problem Solving	Managing challenges, recovering from setbacks, and showing persistence.			2			
Relationship Building	Ability to form and maintain positive and appropriate relationships.				3		
						4	
Sleep & Rest Patterns	Ability to fall asleep, stay asleep, and feel rested.						5
Diet & Nutrition	Eating a balanced diet, awareness of healthy food, and maintaining appetite.		1				
Creativity & Self-Expression	Engagement in arts, music, journaling, or performance to express feelings and identity.			2			
Community Participation	Involvement in local events, groups, volunteering, or youth schemes.				3		
Spirituality / Meaning / Purpose	Connection to faith, values, or a personal sense of purpose.					4	
	Subtotal		5	10	15	20	20
	Total	70					
	Maximum	110					
	Analysis Overview	63.64%					
Reflects that the child needs focused, structured support without negative connotations	Red (0–44%) = High Concern						
Emphasises growth underway, highlights development while acknowledging ongoing need	Amber (45–79%) = Moderate Concern						
Illustrates that the child is consolidating skills and showing positive, sustained progress	Green (80–100%) = Low Concern/ Positive Progress						
	THIS SCORING REFLECT A DISCUSSION POINT FOR EACH CHILD						
	Pros:						
1	Simple Snapshot: A total score gives a quick, quantifiable snapshot of where a child is overall — especially useful for high-level tracking.						
2	Progress Over Time: You can compare totals month-to-month to track general improvement or regression.						
3	LA Reporting: Some local authorities appreciate numeric tracking during review meetings as evidence of therapeutic impact.						
	Cautions:						
1	Oversimplification Risk: A child may score very high in some areas (e.g. education, independence) and very low in others (e.g. trust, emotional regulation). A single total could mask critical concerns thus must always analyse deeply.						
2	Not All Domains Equal: Emotional Regulation or Trust may be more significant to that child's progress than Creativity or Diet.						
3	Not Always Comparable: Some children may have fewer optional areas scored due to age or need — making totals harder to compare fairly.						

Ofsted-Ready and Impact-Led

Charms maintains a full audit trail of all therapy reports, placement plan changes, scoring updates, and review discussions. All decisions are evidenced, with visible integration of the child's voice and multi-agency contributions. This ensures the Home remains ready for Ofsted inspection and continuously reflects on what is working and what needs refinement.

Integrated, Child-Centred Therapy Model

The therapeutic provision is delivered by qualified professionals via sessional agreements and SLAs (Service Level Agreements) until such time as the organisation grows to directly employ internal staff. Every child's care plan includes a therapeutic pathway shaped by assessment, clinical insight, and consultation with the care team and external professionals.

Core Therapeutic Professionals

- **Occupational Therapist (OT)**
Undertakes sensory integration assessments, develops regulation strategies, and guides the design and use of the Sensory Room.
- **Speech and Language Therapist (SLT)**
Supports communication development, language comprehension, social skills, and interaction, particularly for neurodivergent children.
- **CBT Specialist / Clinical Psychologist**
Delivers targeted Cognitive Behavioural Therapy to help children understand and manage anxiety, trauma, emotional regulation, and behavioural challenges.
- **Drama Therapist**
Uses performance, storytelling, and character work to explore identity, emotions, and social understanding.
- **Creative Arts Therapists (Art and Music)**
Provide expressive, non-verbal outlets for children to explore feelings and process trauma through art and sound.
- **LAMDA (Speech and Drama) Provider**
Delivered in partnership with Curtains Up Drama (www.curtainupdrama.co.uk), offering structured, accredited speech and drama sessions to develop confidence, expression, and communication.
- **Equine-Assisted Therapy (RDA)**
Delivered via partnership with the Diamond Centre (Riding for the Disabled Association), promoting trust, self-esteem, and emotional grounding through structured horse riding and animal care.

Complementary Therapeutic Activities

In addition to formal therapy, the home will deliver regular creative and wellbeing-focused activities that reinforce emotional development and build resilience:

- Pet-Assisted Therapy (subject to risk assessment)
- Creative Journaling & Expressive Writing
- Mindfulness and Yoga for Children
- Forest School Therapy / Nature-Based Play
- Therapeutic Group Circle Time
- Music Therapy

These activities are supported by therapists and care staff, woven into routines to ensure consistency and accessibility.

Sensory Regulation Environment

Wallington Children's Home includes a dedicated Sensory Room, which will be designed in consultation with the Occupational Therapist to meet the individual sensory processing and regulation needs of the children.

This space will be used for emotional regulation, calming, structured intervention, or sensory stimulation. **It may include**, depending on OT recommendation and the needs of individual children:

- Bubble tubes and fibre optic lights – visual sensory input and soothing movement
- Colour-changing mood lighting – to support emotional modulation
- Aromatherapy diffusers – calming scents such as lavender (used under supervision and subject to allergy checks)
- Weighted blankets, lap pads, and soft furnishings – for deep pressure and proprioceptive support
- Tactile wall panels and textured floor mats – for sensory exploration and grounding
- Noise-cancelling headphones and music stations – for auditory filtering or calming sounds
- Beanbags, rocking chairs, and therapy balls – for vestibular input and comfort
- Soft play items – for physical movement and sensory seeking
- Story projection tools / visual storytelling – to aid regulation through imagination
- Quiet reflection space – for journaling or LAMDA rehearsal

All items will be regularly risk assessed and maintained, and used as part of individualised sensory regulation plans developed by the OT.

Wallington Children's Home offers a fully embedded therapeutic model as part of our core provision. Therapy is not optional or charged as an extra – it is fundamental to how we care. This ensures children receive structured therapeutic support from the day of placement, avoiding CAMHS delays and supporting long-term placement success.

Oversight, Continuity and Outcomes

Therapists liaise with care staff to share relevant insight, contribute to placement planning, and help track outcomes for children receiving therapeutic input. All therapy is linked to measurable developmental goals and regularly reviewed.

Children at Wallington Children's Home benefit from a therapeutic offer that is responsive, creative, clinically informed, and consistently delivered — ensuring that emotional healing and long-term wellbeing are central to their experience in our care.

As the home expands, a Therapeutic Coordinator may be appointed to centralise therapist oversight, session coordination, and ensure consistency of practice across placements.”

CHILDREN'S HEALTH

The health needs of all the children are determined in consultation with the child, their parents or carers, and lead professionals prior to admission and throughout their time at Wallington Children's Home. On moving into the home, children are registered with local GP, Dentist and Optician within 7 days.

Where children may have long term health conditions, staff are trained in the clinical skills necessary to deliver the care safely. The Children's Home has responsibility for ensuring correct and appropriate training of staff. Where it is necessary to utilise the skills of other individuals, their credentials and identity will be checked thoroughly and, if they require access to the child, it will be with parental/social worker consent and supervised.



Some of the children may require specialised support and follow specialist psychotherapy programmes. Staff members liaise with the relevant professionals to provide these services, if identified. Consultation takes place with parents, carers, and the school, to provide continuity of care for the child during their stay.

Some of the children have specific dietary requirements. Regular discussions with the parents or carers and the dietician, Paediatrician and GP are necessary in order to meet the health needs of the child, whilst also taking into consideration the child's wishes.

Wallington Home will support the local authority who has parental responsibility for a Child in Care and will have increased responsibility to take the children for regular health, dental and optical checks; and all appointment will be recorded.

Staff will support parents at visits, if requested. If any concerns arise about the health of a child, parents or carers are contacted and, if necessary, the child's GP. If necessary, we will either call an ambulance or take the child to the local accident and emergency department for medical attention. The local Hospital is within 2 miles of Wallington Project, this has children's and adolescent services.

If this occurs, families are able to meet and support the child at the hospital unless specific arrangements have been agreed prior to the child's stay. The staff team have awareness and understanding to support children with their emotional wellbeing. Consent forms regarding children receiving medical treatments will be completed prior to accessing the home.

Medication that are used by the child are required to be supplied with the correct dosage of medication, for the child in pharmacy labelled containers when moving into the accommodation. These labels require all information to enable administration of the medication by staff. Any changes in medication should be in written form on the medication authorisation sheet, signed and dated by the parents or social worker and

by a staff member of the home.

At times, the child's medication is changed on a regular basis and a repeat prescription with the new dose on it may be delayed: for example, if the medication is changed by the pediatrician, we may seek confirmation from the child's Pediatrician or GP over the phone.

We may consult with the child's Pediatrician with regard to medication; this is achieved via telephone and email and with full involvement of the parents or carers.

Wallington Children's Home adheres to Lilian Davis Group and Sutton Local Authority policies regarding food hygiene, follows the Food Standard's Agency Registration and Compliance, and follows the local authority's "Better standards, safer food" policies. The meals prepared take into account the individual needs of the children accessing the home, and their choices. The home supports the staff in accessing basic food hygiene training, and training in areas such as Health and Safety, and Infection Control.

At Wallington Children's Home meals are treated as a family event. Children are supported to devise menus, shop and prepare snacks, meals, and baking items.



Wallington Home provides an environment, where healthy living is promoted. We aim to provide ingredients for a varied healthy diet. Opportunities for physical activities are offered, and we promote good personal hygiene and cleanliness.

Wallington Home is a non-smoking site, with smoking prohibited throughout the internal and external periphery, by the children, staff, or visitors.

First Aid, Medication and Health Oversight

All staff at Wallington Children's Home receive regular training in paediatric first aid, in line with statutory guidance. At least one member of staff trained in first aid is present at all times, including during off-site activities, holidays, and trips.

Medication is administered only by staff who have completed approved training in medication administration, and all procedures comply with Lilian Davis Group's medication policy, which is aligned with NICE guidance and the Children's Homes (England) Regulations 2015.

All medicines are stored securely in a locked cabinet within a designated staff area. A record is maintained of all prescribed and non-prescribed medication administered, including dosage, time, and staff initials. Any changes to medication must be confirmed in writing by a medical professional and recorded using the home's medication authorisation form.

Oversight of all medical and medication-related procedures is the responsibility of the Registered Manager and delegated senior staff, who conduct regular audits of medication logs and ensure compliance with safe practice protocols.



POST 16 – CONTINUITY OF CARE

Around 14 per cent of young people in care, leave care at the age of 16, and it is therefore essential that pathway plans are developed in a timely manner, making sure that if a young person is considering leaving care at 16, they know what support is available to them, what their future options are, and have a plan to help them move on to independence successfully.

We work with the Local authorities to develop their pathway plans in a timely manner to ensure that those leaving care as well, as those moving into semi-independent living have the tools from which to continue their independence drive.

We provide appropriate support for the needs of the young people moving into supported accommodation, which is discussed as part of the pathway plan well before the young person is due to leave care.

They have the ability to meet and greet their keyworkers and form a relationship long before they step down, alongside the option of choosing their rooms and colour schemes etc. This minimises disruption of the young people and offer a broad choice of accommodation and the provision of a support package to go with the accommodation.



Our range of post 16 accommodation allows young people to opt for staying close to the residential home where they would have already built their friendship groups and community schemes where they may belong. When staying close, this will provide better options for continuity with the same

keyworker where visits to the home could be permissible, allowing stability of their support network.

Tiered Stepdown provisions

- A. 16- 17-year-olds
- B. 18–20-year-olds
- C. 21-25

All young people between the ages of 21-25 will be assisted to find accommodation through partnering Housing Associations and the wider Local Authority; after proving their ability to live independently.

Transition Planning

*"At Wallington Children's Home, we believe in the importance of planning for a young person's transition to adulthood. Transition planning begins as early as possible, typically from the age of 14, to ensure the young person is well-prepared for independent living. This process is guided by their **Pathway Plan**, which is developed in collaboration with the young person, their social worker, and other key professionals. We focus on identifying their aspirations, strengths, and areas requiring further development to achieve positive outcomes."*

2. Life Skills Development

"We provide a comprehensive life skills programme to support young people in becoming independent. This includes guidance on budgeting, meal planning, household management, applying for employment or further education, and understanding tenancy agreements. Keyworkers provide tailored support to ensure each young person gains confidence in these areas."

3. Tailored Support

"Recognising that every young person's journey is unique, we provide tailored support packages to meet their specific needs. This includes the opportunity to engage with external providers, access training opportunities, and build social networks that will support them beyond the care system."

4. Housing Options

**"Wallington Children's Home offers a range of tiered step-down provisions to ease the transition into adulthood. These include:*

- Semi-independent living arrangements for those aged 16–17, with close support from staff.
- Supported accommodation for young adults aged 18–20, promoting further independence.
- For young people aged 21–25, we collaborate with local housing associations to ensure sustainable, long-term accommodation options are available."*

5. Continuity of Care

"To ensure continuity of care, we encourage ongoing relationships between young people and keyworkers. Where appropriate, young people can remain in close proximity to Wallington Children's Home to maintain their community connections and access additional support as needed. Regular reviews of their progress and support plans are carried out to adapt to their changing needs."

6. Multi-Agency Collaboration

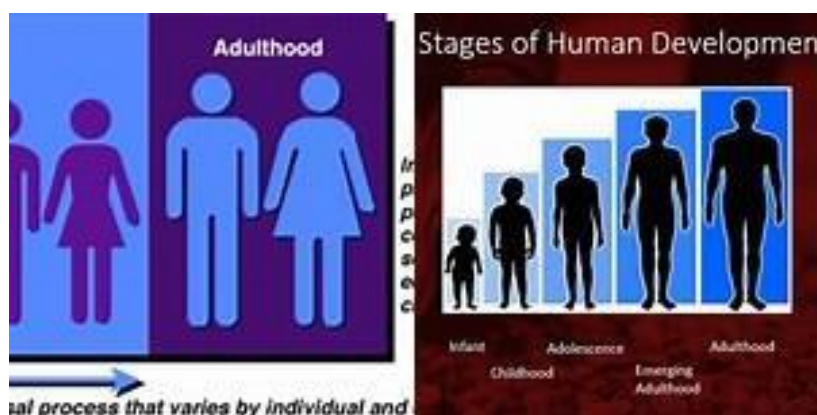
"We work closely with local authorities, education providers, housing services, and health professionals to provide a holistic support framework. This multi-agency approach ensures that young people have access to all necessary resources and opportunities to succeed as independent adults."

7. Emotional and Mental Health Support

"Transitioning to adulthood can be an emotionally challenging time. We provide access to counselling and mental health services to support young people through this process. Staff are trained in emotional regulation techniques and offer consistent encouragement and guidance."

8. Monitoring and Feedback

"We actively involve young people in shaping their transition plans by seeking their feedback and incorporating their preferences. Progress is regularly reviewed with their keyworker to ensure they feel supported and empowered throughout their journey to independence."



STAFF TEAM AND RECRUITMENT

Wallington Children's Home staff team are recruited, according to Lilian Davis Group Safer Recruitment Policies and Procedures, as recommended in the 'Warner Report: Choosing with Care (1992)'. All staff meet the requirements of the Children's Home Regulations 2015.

All our staff hold a satisfactory enhanced Disclosure and Barring Service, meet Schedule 2 requirements, set out in the Children's Home Regulations 2015, and work-related references dating back at least five years are scrutinised.

The staffing is based upon the children accessing the home, and their individual needs. This is reviewed regularly. At night the home is staffed by a live in care worker and two waking night member of staff, with the support of an On-Call Manager. Staffing levels are regularly reviewed to ensure they meet the changing needs of children. Emergency staffing plans include the use of minimal bank staff to maintain continuity and high-quality care.

Wallington Children's Home has a Registered Manager, Deputy Manager, Safeguarding Lead and a Team Leader, all of whom are qualified managers with Health & Social Care Level 5 Leadership, an equivalent qualification or in the process of completing the qualification, Assistant Team Leaders and Care & Support Assistants, complete the team.

The team hold a wealth of experiences within childcare settings. The Registered Manager is accountable to the CEO for Lilian Davis Group. The Deputy Manager and Team Leader have responsibility for management of the Assistant Team Leaders and Care & Support Assistants. The Assistant Team Leaders oversee day-to-day tasks and activities whilst on shift and will support with staff management as required. Bank staff are available, if needed, to support staffing levels during holidays and cover staff absence. The use of bank

staff is minimal within Lilian Davis Group.

The Registered Manager regularly meets with the CEO for Lilian Davis group for supervision. The Management Team regularly sources training for the staff. They also assess the individual staff members' competence for each procedure they are trained in.

Wallington Children's Home recruitment of staff is designed to encourage a diverse workforce, to enable children to have opportunities to access appropriate role models in their home, as well as their school and social life.

All staff members employed at Wallington complete mandatory and professional training policies, procedures and appraisals. All staff regular supervision. Staff training is tailored on the individual needs of the children living the home. A training matrix is available, the training needs of each role within the identifying gaps.



Home in line with receive and focused or accessing detailing all home and

Mandatory training includes areas such as Induction, Communication, Health and Safety, Conflict Resolution, Medicines Management, Safeguarding, Equality and Diversity, Manual Handling, Risk Assessments, , Behaviour Management, Learning Disability Awareness, Paediatric First Aid, Mental Capacity Act, DOLS, Autism Spectrum Disorders and Information governance. All staff attend the required annual Fire Safety updates. Fire drills will occur at intervals throughout the year, for both children and staff, with details recorded.

Emergency and Disaster Planning

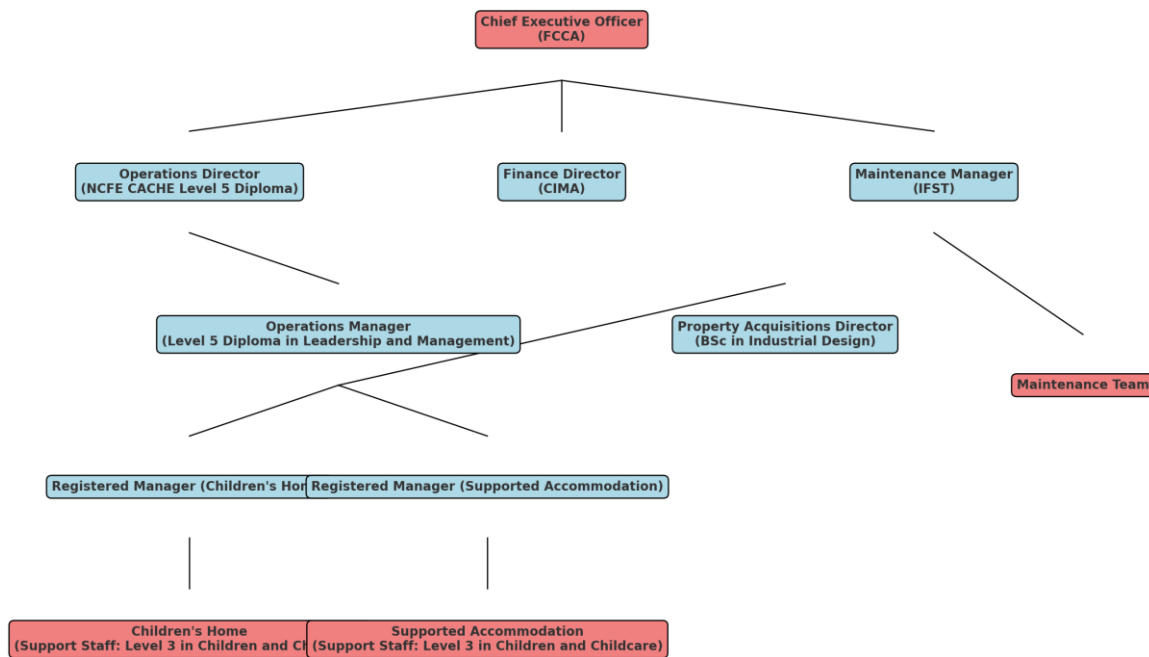
"Wallington Children's Home has a comprehensive disaster and emergency plan, which is regularly reviewed and tested to ensure the safety of children, staff, and visitors. All staff are trained in emergency response procedures, including fire drills, evacuation protocols, and handling unexpected events such as power outages or severe weather conditions.

Key features of our disaster planning include:

- **Fire Safety:** Fire risk assessments are conducted annually, and evacuation drills are held quarterly. Fire extinguishers, alarms, and emergency lighting are inspected regularly.
- **Flood or Severe Weather:** The home has measures in place to respond to flooding or severe weather events, ensuring minimal disruption to children's care.
- **Power Failures:** Emergency lighting and backup systems ensure safety during power outages. Staff are trained to manage essential operations during such events.
- **Emergency Contacts:** A designated emergency contact team is available 24/7 to coordinate responses and provide guidance.
- **Local Resources:** We maintain up-to-date contact information for emergency services, including local police, fire departments, and healthcare providers.

The disaster plan is shared with staff during induction and regularly updated based on risk assessments and feedback from quality assurance reviews. Children are supported to understand and participate in safety drills to reduce anxiety and promote preparedness.

Lilian Davis Group Organisational Chart



Below is the structure for the Lilian Davis Group, clearly showing the qualifications for each key position in the organisation:

Chief Executive Officer (CEO): FCCA - Fellow of the Association of Certified Chartered Accountants

Operations Director: NCFE CACHE Level 5 Diploma in Leadership for Health and Social Care and Children and Young People's Services (England)

Finance Director: CIMA - Chartered Institute of Management Accountants

Maintenance Manager: IFST - Institute of Food Science and Technology

Property Acquisitions Director: BSc in Industrial Design

Operations Manager: Level 5 Diploma in Leadership and Management

Registered manager: Level 5 Diploma in Leadership for Health and Social Care and Children and Young People's Services

Support Staff for Children's Home and Supported Accommodation: Level 3 in Children and Childcare

QUALITY ASSURANCE

We have a regulation 44 inspector who visits the home every 3 months to review the quality of our service, and who meets and talk with the children, their relatives and other professionals surrounding the young person. The inspector provides a written report for the home which is also shared with Ofsted.

Quality monitoring of the home will be carried out by the Registered Manager and the Responsible Individual.



Registered Manager and Deputy Manager hold or are working towards Diploma 5 or equivalent with previous experience in the role. Team Leaders and Assistant Team Leader have the opportunity to work towards gaining NVQ level 4 or level 5 Diplomas in relevant subject areas. Care and Support Assistants will be required to hold or be working towards a Diploma level 3. Training is provided by LC Training and Consultancy Ltd, who provides training and development of our staff

The home complies with Lilian Davis Group Human Resources Policies and Procedures. Staff are able to join a union and access a Union Representatives, or Peninsula which is our Human

Resources Service, for advice and support at any time. Peninsula also provides occupation health support for all staff, and this is a confidential process where required.

Statement of Regulatory Compliance

Wallington Children's Home operates in full compliance with the **Children's Homes (England) Regulations 2015** and the associated **Quality Standards**. These regulations set the framework for ensuring that children receive high-quality care in a safe and nurturing environment that promotes their welfare and development.

We are committed to meeting and exceeding the following Quality Standards:

- **The Care Planning Standard:** Ensuring all children have clear and personalised care plans tailored to their individual needs.
- **The Health and Well-being Standard:** Promoting physical, emotional, and mental health through structured support and access to necessary health services.
- **The Protection of Children Standard:** Safeguarding children from harm and promoting their safety through robust policies, staff training, and risk assessments.
- **The Education Standard:** Supporting educational attainment and personal development by working closely with schools and providing in-house educational support.
- **The Leadership and Management Standard:** Demonstrating effective leadership and governance, ensuring that the home operates to the highest standards.
- **The Positive Relationships Standard:** Encouraging positive relationships between children, staff, families, and professionals.
- **The Child's Views, Wishes, and Feelings Standard:** Actively involving children in decision-making processes regarding their care and the running of the home.

- **The Accommodation Standard:** Providing safe, comfortable, and homely accommodation that meets the needs of all children.

Wallington Children's Home adheres to the **Ofsted Inspection Framework**, which evaluates the quality of care, leadership, and outcomes for children in residential care. We strive to achieve the highest ratings through continuous improvement, staff training, and a child-focused approach.

In addition, our policies, procedures, and practices align with the following statutory guidance and legislation:

- **The Children Act 1989 and 2004**
- **Working Together to Safeguard Children 2018**
- **The Care Standards Act 2000**
- **Keeping Children Safe in Education 2023**
- **The Equality Act 2010**

We are committed to transparency and accountability, ensuring that all staff, children, families, and external professionals can access information about our practices and services. Regular reviews, independent quality assurance checks, and feedback mechanisms are in place to ensure we consistently meet and exceed regulatory requirements.

Conclusion:

At Lilian Davis Children's Home, we believe in the untapped potential within each child. Through our specialised care, supportive environment, and unwavering belief in their capabilities, we strive to light the way for a brighter, more hopeful future for every child who steps through our doors.

For further information please contact Rachael Webb (Registered Manager)

Rachael.Webb@Liliandavisgroup.co.uk